

## CHLORINE INSTITUTE

# EMERGENCY KIT "B"

## FOR ONE TON CHLORINE CONTAINERS



The Chlorine Institute Emergency Kit "B" is manufactured to the design specifications of the Chlorine Institute.

The Emergency Kit "B" contains devices to stop leaks at the valves, fusible plugs, and in the side wall of chlorine one ton containers which conform to specification DOT 106A500X. Two instruction booklets explaining the application of each device are included. An instruction video for Kit "B" is also available.

### EMERGENCY KIT "B" FEATURES:

**Device #4:** a capping device designed to contain leaks in and around ton container fusible plugs.

**Device #12:** designed to contain leaks in and around the ton container valves.

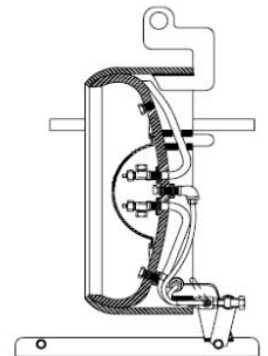
**Device #8:** a patching device designed for sealing leaks in the ton container side wall.

Kit B also includes a variety of hand tools, inspection seals and additional sealing devices. All items are labeled with a part number, color coded yellow and stored inside a durable polyethylene tool box.

### EMERGENCYKIT "B" TRAINING DEVICES

The **Chlorine One End Training End** is an actual full size end of the standard DOT106A500X container designed to simulate valve and fusible plug leaks for training upon, part #END.

**Kit "B" Instruction Video** part# BLAVis an 11 min.VHS tape that provides proper instruction in the application of Kit "B" tools & devices.



## CHLORINE INSTITUTE

# EMERGENCY KIT "B"

### Applications and Parts List

Part Number	Name	Quantity per Kit
4A	Hood Assembly	1
4C	Yoke	1
4D	Gasket, Garlock 3000, 1-1/4 OD x 11/16 ID x 1/16	3
4E	Stud	1
4F	Cap Nut	1
4G	Gasket, Garlock 3000, 15/16 dia. x 1/16	5
9A	Chain	1
9B	Yoke	1
9C	Cap Screw	1
9D	Steel Patch	1
9EV	Gasket, Viton**, 3" sq. x 1/8	2
12A	Hood Assembly with (12V) Vent Valve	1
4-12BMV	Gasket, Molded Viton**, 4" OD x 2-5/8 ID x 1/4	2
12BBV	Gasket, Viton, 5" OD x 2" ID x 1/2 Th.	1
12C	Bar Assembly	1
12MV	Gasket, Molded Viton**, 5-1/4 OD x 2-1/4 ID x 3/4	1
101	Wrench, straight open end, 1-1/4 x 12	1
104	Wrench, socket, 1-1/4 hex	1
104A&C	Wrench extension, 1" sq. drive x 9 with adaptor	1
104B	Wrench bar, 1" dia. x 20	1
106	Wrench, crowfoot special, 1-5/32 x 11	1
200	Wrench, 3/8 sq. box & 1-1/4 open end x 7-1/4	1
B-1	Drift Pin, 5/32 x 1/2 x 6	2
B-2	Drift Pin, 7/8 x 1-1/4 x 8	2
B-3	Drift Pin, 1-1/16 x 1-7/16 x 8	2
B-4	Ring, vent valve packing, 7/8 OD x 15/32 ID x 1/4 sq.	5
B-5	Paint Scraper, 1-1/4 blade	1
B-6	Hammer, Machinist 3 lb.	1
B-7	Metal Railroad Car Seal	15
B-8	Gasket Sack	1
B-9	Valve Yoke	1
B-10	Valve Adapter (820-hose)	1
B-11	Gasket Garlock 3000, 15/16 OD x 9/16 ID 1/16	5
B-12	Plastic Box	1
153	Toll Roll	1
151B	Kit Box, 35 x 13-3/4 x 14-1/4	1
-	Instruction Booklet	2
-	Chlorine Manual	1
-	Parts List	1

\*Note: Emergency Kit B weighs 113 lbs.  
\*\*Note: Viton @ fluoroelastomer is a registered trademark

Authorized, trained personnel equipped with suitable respiratory equipment should investigate chlorine leaks promptly. All other persons should be restricted from the affected area. Breathing apparatus or other personal protective equipment are not included in the kits, but must be used when investigating and correcting chlorine leaks and are available from Bisan Trading & Industrial

